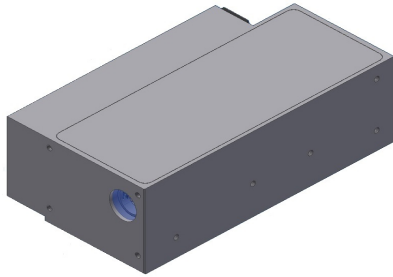


## One – 3W – 1064nm

Spec# 18101

### Miniaturized Q-Switched DPSS Laser



#### FEATURES

- Miniaturized Design
- up to 3W
- 1064nm
- up to 30 kHz
- 15 V DC Power Supply Input

#### Technical Specifications

Max Output Power	up to 3	W
Q-Switch Repetition Rate	up to 30	kHz
Pulse Energy	100	μJ
Wavelength	1064	nm
Pulse Width	10 to 20	ns
M <sup>2</sup>	< 1.5	
Beam diameter @ 1/e <sup>2</sup> (integrated BEX)	< 8 (option 3 mm)	mm
Electrical Requirements	DC Power Supply 15 V / < 5 A	
Cooling	Contact Cooled	
Dimensions	13 x 7 x 4 (complete unit including driver)	cm <sup>3</sup>
Weight	< 1	kg

#### Options Available:

- Beam Expander
- Red Aiming beam
- Air Cooled Heat-sink

#### Applications:

- Material Processing
- Marking and Scribing



All information included in this document is subject to change without notice.  
Updated datasheets can be provided on request.

For further details, please contact your local **Bright Solutions** sales representative or visit our website at [www.brightsolutions.it](http://www.brightsolutions.it)

**Bright Solutions S.r.l**  
Via Artigiani 27, 27010  
Cura Carpignano (Pv) Italy  
Ph.: +39 0382583094  
e-mail: [sales@brightsolutions.it](mailto:sales@brightsolutions.it)  
[www.brightsolutions.it](http://www.brightsolutions.it)